



## DELTA SINGLE CARTRIDGE SEAL WITH API DESIGN

Single cartridge seal design per API 610 7th edition. Flush connections standard, confined gland gasket, gland pilot register, floating throttle bushing, and narrow face technology

### STYLE 3610



#### Technical Features

**API 610 Design** features include confined gland gasket, gland pilot register, floating throttle bushing, narrow face technology.

**Tangential flush connections positioned over the seal faces** utilize the largest thru hole diameter available, supplying over 4 times the volume of straight drilled flush holes, providing maximum cooling and cleaning of seal faces maximizing seal life.

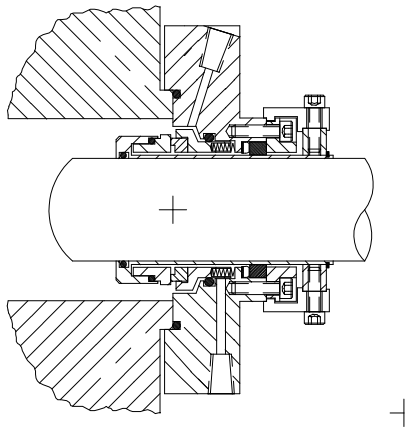
**Rotary inboard faces stabilized under compression** are flexibly mounted utilizing o-rings for their shock and vibration absorption qualities. This eliminates premature fractures in the faces under thermal and mechanical shock that can cause catastrophic failures in other designs with faces under tension.

**Balanced stationary cartridge design utilizes all static o-rings**, which eliminates damage to the pump shaft/sleeve or seal normally caused by rotary pusher component or pusher cartridge type seals, allowing use of solid pump shafts which minimize deflection.

**Gland registered** to stuffing box by I.D. or O.D. pilot.

**Choose from spare parts kits for field repair or the optional factory repair program.** State of the art, easy-to-install design uses the least number of components, simplifying field repair, resulting in low life cycle costs.

All seals are pressure tested at the factory assuring 100% sealability during startup.



#### Application Data

**Shaft speed:** To 3600 RPM

**Pressure:** Vacuum to 400 PSI

**Temperature:** See O-ring limitations

#### Materials

**Metal Parts:** 316SS

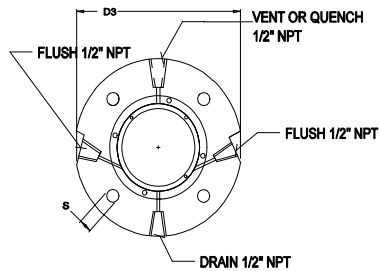
**Springs:** Hastelloy "C"

**Faces:** Combinations of Carbon, Sintered-Silicon Carbide, and Tungsten Carbide

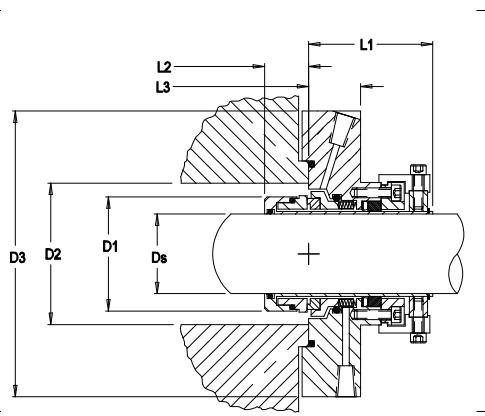
**Elastomers:** Viton, EPR, Kalrez, Aflas, Teflon

# DIMENSIONAL DATA FOR DELTA SEAL STYLE 3610

**FRONT VIEW**



**SIDE VIEW**



**OPTIONAL GLAND FEATURE**

DS Seal Size	D1 Sleeve OD	D2 Min	D2 Max	D3 Gland OD	D4 Gland Flat	A Min. Bolt Circle by Stud Size				S Slot Width	L1 Outside Length	L2 Inside Length	L3 Gland Length	Pos. 1 Oring	Pos. 2 Oring	Pos. 3 Oring	Pos. 4 Oring	Pos. 5 Oring	Pos. 6 Oring
						3/8"	1/2"	5/8"	3/4"										
1.000		1.8750		4.110	N/A					2.625	0.650	1.375	120	129	223				
1.125		2.000		4.435	N/A					2.625	0.650	1.375	122	131	224				
1.250		2.125		4.435	N/A					2.625	0.650	1.375	124	133	225				
1.375		2.250		4.875	N/A					2.625	0.650	1.375	126	135	226				
1.500		2.375		4.875	N/A					2.625	0.650	1.375	128	137	227				
1.625		2.500		4.470	N/A					2.625	0.650	1.375	130	139	228				
1.750		2.625		5.470	N/A					2.625	0.650	1.375	132	141	229				
1.875		2.750		5.500	N/A					2.625	0.650	1.375	134	143	230				
2.000		2.875		5.830	N/A					2.625	0.650	1.375	136	145	231				
2.125		3.000		6.250	N/A					2.625	0.650	1.375	138	147	232				
2.250		3.125		6.250	N/A					2.625	0.650	1.375	140	149	233				
2.375		3.250		6.500	N/A					2.625	0.650	1.375	142	151	234				
2.500		3.375		6.500	N/A					2.625	0.650	1.375	144	151	235				
2.625		3.825		7.750	N/A					2.625	0.650	1.375	146	236	236				
2.750		3.950		8.000	N/A					2.625	0.650	1.375	232	238	238				
3.000		4.200		8.250	N/A					2.625	0.650	1.375	234	240	240				
3.250		4.450		8.500	N/A					2.625	0.650	1.375	236	242	242				
3.500		4.700		8.600	N/A					2.625	0.650	1.375	238	244	244				
3.750		4.950		9.000	N/A					2.625	0.650	1.375	240	246	246				
4.000		5.200		9.250	N/A					2.625	0.650	1.375	242	248	248				
4.250		5.450		9.500	N/A					2.625	0.650	1.375	244	250	250				
4.500		5.700		9.750	N/A					2.625	0.650	1.375	246	252	252				
4.750		5.965		10.000	N/A					2.625	0.650	1.375	248	254	254				

**Distributed By:**

(Phone)  
(Fax)



**Manufactured By:**

Delta  
44 Propper Lane  
Fall River, MA 02720  
508-324-4032 (Phone)  
508-324-4339 (Fax)

